



# Product Specification

**Ningbo East Electronics Limited**  
NO. 88 East Jinhui Road, Yinzhou Ningbo 315100, P.R.China  
<http://www.east-mingtao.com>

Product Name:	High-Output Speaker
Part Number:	W-36L2
Version:	1.03
Date:	2015-3-13
Note:	

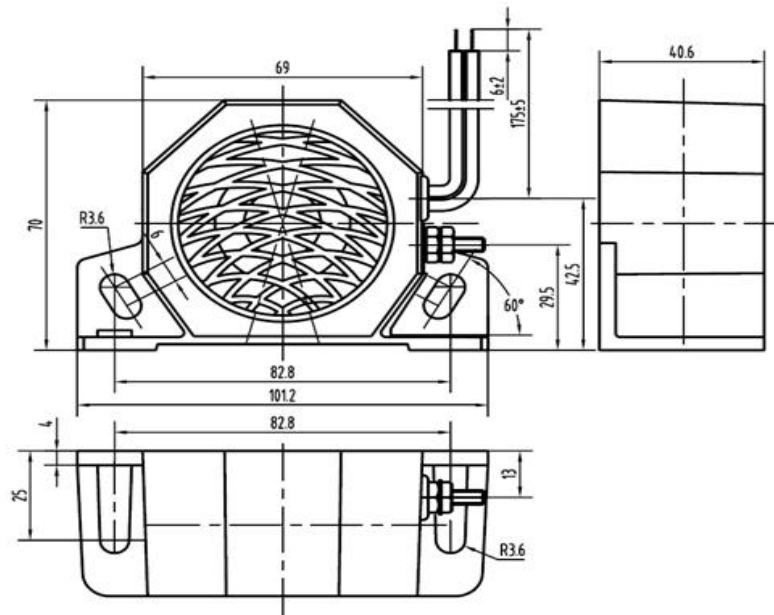
**Company passed ISO 9001 / ISO TS16949 / ISO 14001 Certifications**

## Revision History

Rev.	Description	Author/Date	Checked By	Approver
1.03	Max. consumption updated into 300mA	郭波波 2015-3-13	汤礼东	王建成
1.02	Operating temperature change is to -40 °C ~ +85 °C	汤礼东 2014-7-30	吴磊	王建成
1.01	Change the product name	汤礼东 2014-4-29	吴磊	王建成

## 1. Part Number W-36L2

## 2. Dimension Drawing (Unit: mm)



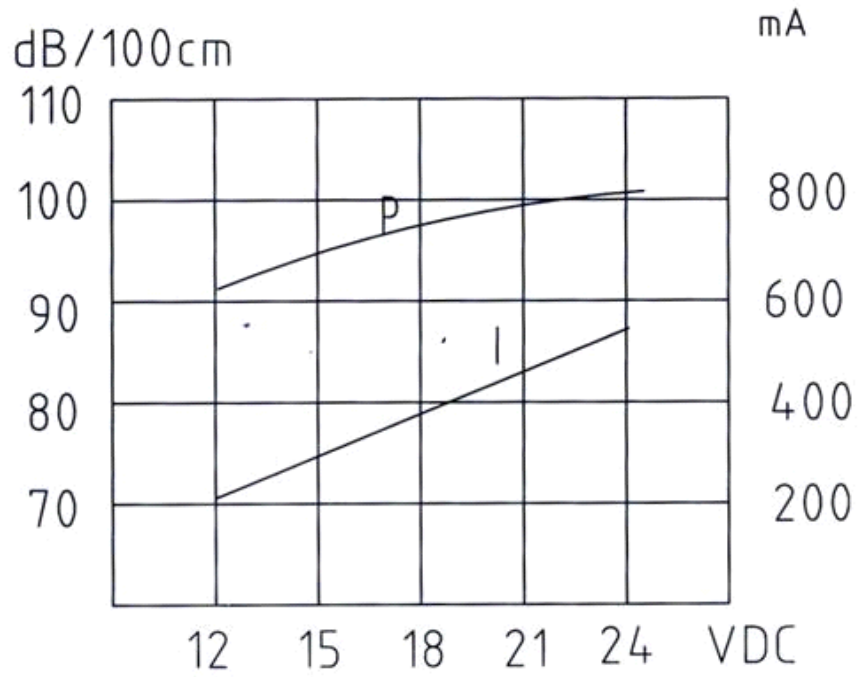
## 3. Specification

No.	Item	Specification
3-1	Min. Sound Pressure Level	93dB/14V <sub>DC</sub> /100cm
3-2	Rated Voltage	14V <sub>DC</sub>
3-3	Operating Voltage	12~24V <sub>DC</sub>
3-4	Max. Consumption	300mA/14V <sub>DC</sub>
3-5	Oscillating Frequency	1200± 200Hz
3-6	Tone Nature/Wire Connection	Slow Pulse (1.2Hz±20%)/RED (+) Dual Tone/White (+)
3-7	Operating Temperature	-40~+85°C
3-8	Case Material/Color	PA66/Black
3-9	Weight	265g
3-10	Wire Standard	UL1015-16AWG

### NOTES:

Test should be made under the conditions of room temperature (20±10°C), normal humidity (60±20%) and normal atmospheric pressure. In this case, however, that the judgment is questionable, the test conditions are to be changed to room temperature 20±2°C, relative humidity 60~70% and normal atmospheric pressure

#### 4. Typical Frequency Response Curve

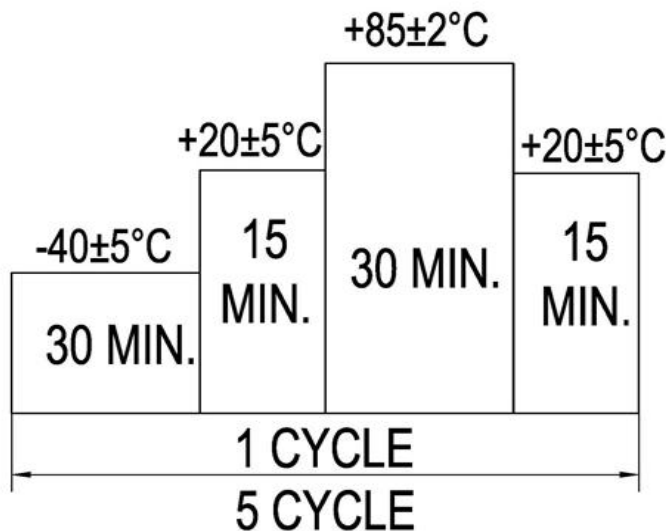


**Note:**Distance 100 cm

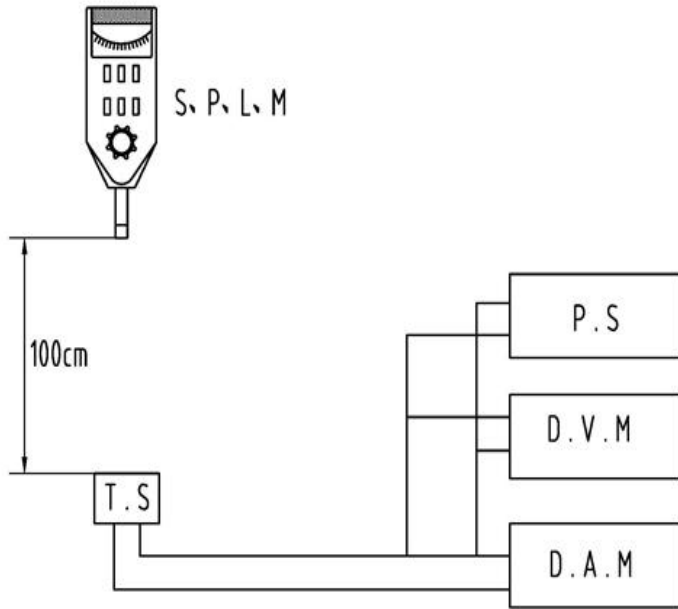
## 5. Reliability Test

No.	Item	Method of Test	Tolerance after Testing
5-1	Operating Temperature	-40~+85°C	Sound pressure level initial value $\pm 10\text{dB}$ Max. consumption value $\pm 20\%$ Oscillating Frequency Value $\pm 20\%$
5-2	Storage in high temperature	Storage in +85°C test box 96 hours then exposed to the room temperature for 2 hours	
5-3	Storage in low temperature	Storage in -40°C test box 96 hours then exposed to the room temperature for 2 hours	
5-4	Life test in the room temperature	Operate the product continuously 5 seconds on 5 seconds off 96 hours at rated voltage	
5-5	Temperature / humidity cycle test	Storage in +40°C, 93 $\pm$ 3%RH test box 96 hours then exposed to the room temperature for 2 hours	
5-6	Temperature (high and low) cycle test	Conduct the test for 5 cycles without applying power then expose to the room temperature for 2 hours.(See Figure 5-6)	
5-7	Vibration test	Conduct the test for the directions of X Y and Z for 0.5 hour each (total 1.5 hours). To-and Fri sweep time(from 10 to 55Hz and then 55 to 10) under single amplitude of 0.75mm is 3 minute, then expose to the room temperature for 2 hours	
5-8	Drop test	Drop a product naturally from the height of 700mm onto the surface of 100mm thick wooden board. Two directions: upper and side of the product are to be applied for this drop test once respectively	

Figure 5-6



## 6. Electrical Testing Method



S.P.L.M	Sound Pressure Level Meter
T.S	Testing Sample
P.S	Power Supply
D.V.M	DC Voltage Meter
D.A.M	DC Ampere Meter

## 7. Packing Information

**Packing: 36 pcs per export carton**

**Carton Size: 32× 25× 19 cm**

**G. Weight: 11.0 kgs N. Weight: 9.5 kgs**